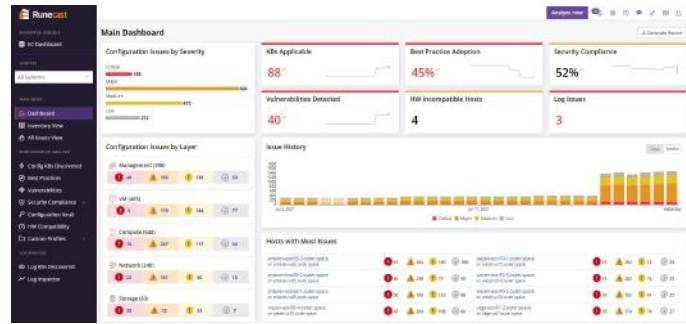


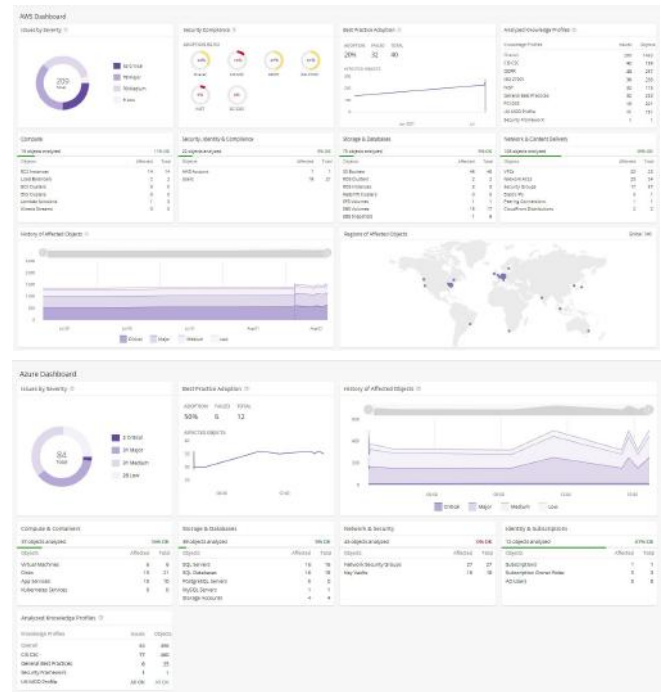
**Runecast Analyzer** helps you to proactively avoid outages, mitigate risks, and ensure compliance with your necessary security standards. Its patented rules engine converts industry sources of information into machine-readable data. This data is processed on the Runecast Analyzer appliance, which then scans your AWS, Azure, Kubernetes and VMware environments for hidden problems, deviations from best practices, and non-compliance with the security frameworks that you select.

The appliance is provided as an industry-standard OVA, and you can be up and running with actionable insights in minutes.



**SUPPORTED TECHNOLOGIES:**

- **AWS** – AWS Config, AWS Health, AWS Inspector, Cloudfront, Cloudtrail, Cloudwatch, EC2, ECS, EFS, EKS, IAM, Kinesis, Lambda, RDS, Redshift, S3, VPC
- **Azure** – AAKS, Azure AD, Azure App Services, Disks, Key Vault, MySQL Server, Network Security Group, Network Watcher, PostgreSQL Server, SQL Server, Storage Accounts, Subscription, Virtual Machines
- **Kubernetes** – Amazon EKS, Microsoft AKS, Google GKE, VMware Tanzu, HPE Ezmeral Container Platform
- **VMware** – vSphere, Horizon, vSAN, NSX-T, NSX-V, VMware Cloud Director, SAP HANA (on vSphere), PureStorage (on vSphere), vSphere on Nutanix
- Plugins available for integration with the vSphere Client, vRealize Orchestrator and ServiceNow



**Key Features**

**ISSUE PREVENTION**

Continuously checks your environment for configuration problems against known issues, best practices & security compliance standards – for AWS, Azure, Kubernetes and VMware infrastructures.

**LOG ANALYTICS**

Monitors ESXi host & VM log files for problems, showing you how to resolve issues quickly.

**SECURITY COMPLIANCE**

Proactively audits your compliance against BSI ITGrundschutz, CIS, Cyber Essentials, DISA STIG, Essential 8, GDPR, HIPAA, ISO 27001, NIST, PCI-DSS, VMware Security Configuration Guide, Common Vulnerabilities and Exposures (CVEs) and customized checks for your internal audit needs. Runecast Analyzer is CIS Certified for both vSphere and AWS.

**CONFIGURATION VAULT**

Tracks your configuration to help you prevent drift. Reports your entire configuration and provides the ability to compare your configurations over time.

## RUNS FULLY ON-PREMISES

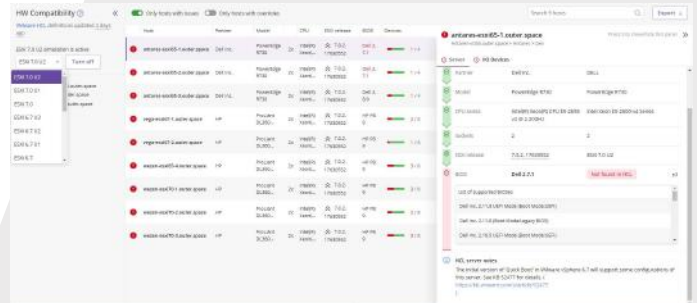
All analysis is run locally on the Runecast Analyzer appliance, meaning no data is sent outside of your control. It can operate entirely disconnected from the internet, with updates applied out-of-band. Of course, if you can connect to the internet then you can pull updates automatically from our online repository.

## REMEDiation SCRIPTS

A growing number of findings in Runecast Analyzer offer remediation actions – allowing you to download the customized script to perform the reconfiguration. Some rules offer more than one remediation option, for example PowerCLI and Ansible.

## UPGRADE SIMULATIONS

Validates your hardware, drivers, and firmware against current and upstream releases of ESXi for faster upgrade planning.



## System Requirements

Full system requirements are documented in the [Runecast Analyzer User Guide](#).

Size	CPU	RAM (Gb)	Disk (Gb)	Network (Mbps)
Small (up to 50 hosts)	2	6	120	100 (1Gb rec.)
Medium (up to 150 hosts)	4	8	120	100 (1Gb rec.)
Large (up to 1200 hosts)	8	32	120	100 (1Gb rec.)

Network communications between Runecast Analyzer all take place over a secure HTTPS connection (TCP 443). ESXi communication to Runecast Analyzer for Syslog communication runs over the standard Syslog port (UDP 514).

➔ When Runecast Analyzer is allowed to perform online updates these are also pulled over HTTPS from <https://updates.runecast.com>

➔ Full port requirements are detailed in the Runecast Analyzer User Guide, which can be found at <https://docs.runecast.com>

## Required Privileges

The majority of Runecast Analyzer's reporting capabilities can be achieved using an account with Read-Only permissions within vCenter Server, however, in order to utilize some features, extra privileges may be required. These are detailed in the [Runecast Analyzer User Guide](#), which can be found at <https://docs.runecast.com> A PowerCLI script is provided on our [Github page](#) to automate the creation of this role if required.

## ➔ Want to learn more?

For further information, to download a demo or to set up a call to further discuss Runecast Analyzer with our team of experts please visit [www.runecast.com](http://www.runecast.com) or email us at [innovate@runecast.com](mailto:innovate@runecast.com). We look forward to speaking with you!